

# Curmi and Partners : Local Market commentary

---

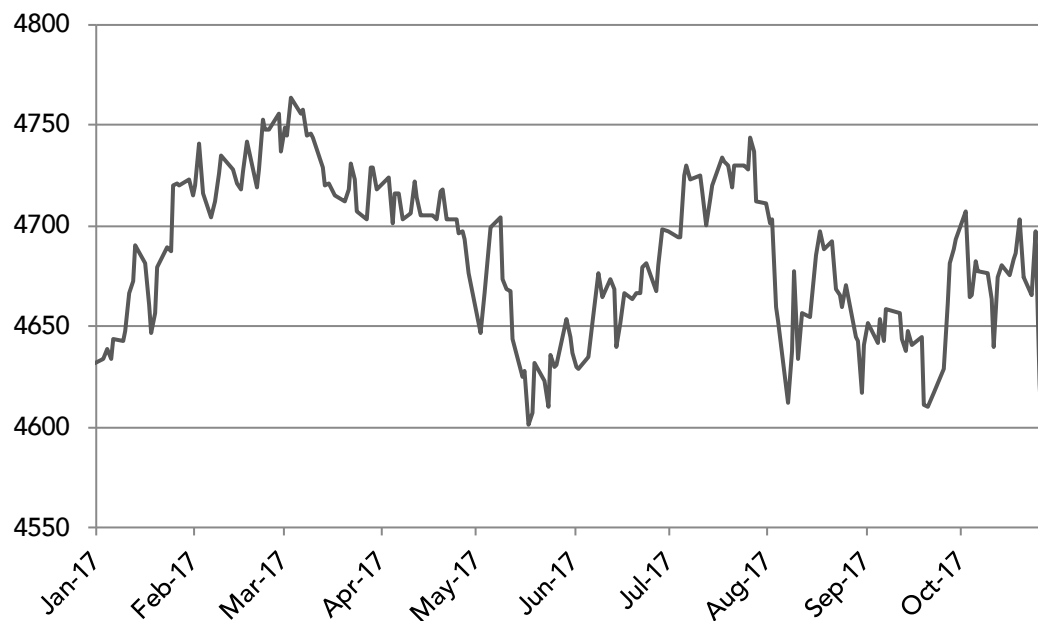
Local Market Update  
Week ending 27th October 2017

## MSE Performance Vs International Markets

Index	30/12/2016	20/10/2017	27/10/2017	YTD	Week %
EURO STOXX 50	3290.52	3605.09	3652.61	11.00%	1.32%
Deutsche Boerse AG	11481.06	12991.28	13211.75	15.07%	1.70%
CAC 40	4862.31	5372.38	5497.32	13.06%	2.33%
S&P 500	2238.83	2575.21	2571.82	14.87%	-0.13%
FTSE 100 Index	7142.83	7523.23	7506.89	5.10%	-0.22%
MSE Price Index	4630.88	4674.21	4653.37	0.49%	-0.45%
MSE Total Return Index	8798.58	8977.09	8937.08	1.57%	-0.45%

Source: Bloomberg; Malta Stock Exchange

## MSE Price Index Performance YTD



Source: Malta Stock Exchange

- The MSE Index fell by 0.45% closing at 4653.372 points following a 1.64% drop on Wednesday which was mainly driven by a sharp fall in the price of BOV shares. The index regained 1.15% on Friday. A total of 1.9 million shares worth €2.7 million were traded this week, with 33% traded in Bank of Valletta plc and 38% in International Hotel Investments plc.

## Local Market – Main Movers

- Malita Investments plc was this week's best performer, gaining 6.7% this week closing at €0.80 over 20,000 shares.
- Midi plc and Plaza Centres plc were both up 5.6% this week closing at €0.32 and €1.11 respectively.
- Lombard Bank plc gained 4.6% this week over volumes totalling 10,574 shares, closing at €2.30.
- Malta International Airport plc maintained its positive performance gaining 2.4% this week marking a new 52-week high at €4.80 on Thursday and closing at €4.79. This marks the 9<sup>th</sup> consecutive week of gains.
- PG plc was back up to its all time high at €1.50 this week over 44,175 shares.
- Simonds Farson Cisk plc reached a high of €9.65 as it gained 1.90% this week over light volumes of 1,631 shares.
- Bank of Valletta plc was this week's worst performer retreating 4.8% this week to €2.0. The stock fell to €1.85 on Thursday, shareholders appearing on the register of members as at the close of business on Thursday will be offered to participate in the right issue. Interim statements for the twelve month period ending 30<sup>th</sup> September 2017 were made available to the public today. A total of 629,713 shares were traded this week.
- RS2 Software plc fell to €1.60 this week, losing 4.7% over 57,079 shares.
- International Hotel Investments plc was the most actively traded stock this week with 731,782 shares traded, a total value of €447,684. The stock closed at €0.61.

## Local Market Overview – Equities

Security	Trade Volume	Trade Value	20.10.2017	27.10.2017	Week % Change
Bank of Valletta plc	629,713	1,250,749	2.10	2.00	-4.76%
GO plc	16,193	58,156	3.59	3.59	0.00%
HSBC Bank Malta plc	16,796	31,549	1.86	1.86	0.22%
International Hotel Investments plc	731,782	447,684	0.61	0.61	-0.65%
Lombard Bank plc	10,574	24,163	2.20	2.30	4.55%
Midi plc	49,800	15,886	0.30	0.32	5.63%
Medserv plc	87,843	107,640	1.26	1.26	0.00%
Malta International Airport	91,960	437,437	4.68	4.79	2.35%
Malita Investments plc	20,000	15,758	0.750	0.800	6.67%
Mapfre Middlesea plc	10,000	19,270	1.860	1.927	3.60%
Malta Properties Company plc	63,031	32,375	0.504	0.507	0.60%
Maltapost plc	5,775	11,748	2.030	2.050	0.99%
PG Group plc	44,175	66,229	1.460	1.500	2.74%
Plaza Centres plc	71,345	76,082	1.050	1.109	5.62%
RS2 Software plc	57,097	91,397	1.679	1.600	-4.71%
Simonds Farsons Cisk plc	1,631	15,542	9.470	9.650	1.90%
Santumas Shareholdings plc	1,830	4,118	2.250	2.250	0.00%
Tigne Mall plc	20,000	19,149	0.955	0.960	0.52%

Source: Malta Stock Exchange

## Local Market Overview – Equities

Company Name	Market Cap	Shares in Issue	EPS	P/E Ratio	Interim Div	Final Div	LTM Div	LTM Div Yield
Bank of Valletta plc	€ 840,000,000	420,000,000	0.24	8.23	€ 0.045	€ 0.079	€ 0.124	6.21%
HSBC Bank Malta plc	€ 669,809,038	360,306,099	0.11	16.60	€ 0.047	€ 0.041	€ 0.088	4.73%
Malta International Airport plc	€ 388,852,152	81,179,990	0.16	30.88	\$ 0.0462	\$ 0.1077	€ 0.154	3.21%
International Hotel Investments plc	€ 375,567,801	615,684,920	-0.01	Negative	€ -	€ -	€ -	-
GO plc	€ 363,704,652	101,310,488	0.18	19.73	€ -	€ 0.110	€ 0.110	3.06%
Simonds Farsons Cisk plc	€ 289,500,000	30,000,000	0.40	23.86	€ 0.033	€ 0.080	€ 0.113	1.17%
RS2 Software plc	€ 274,444,190	171,527,619	0.00	400.00	€ -	€ 0.010	€ 0.010	0.63%
FIMBank plc	€ 220,135,142	314,478,774	0.02	43.48	€ -	€ -	€ -	-
Mapfre Middlesea plc	€ 177,284,000	92,000,000	0.05	38.54	€ -	€ 0.038	€ 0.038	1.99%
PG plc	€ 162,000,000	108,000,000	0.35	4.29	€ -	€ -	€ -	-
Lombard Bank Malta plc	€ 101,609,202	44,177,914	0.11	21.50	€ -	€ 0.040	€ 0.040	1.74%
MaltaPost plc	€ 77,192,176	37,654,720	0.06	34.17	€ -	€ 0.062	€ 0.062	3.00%
MIDI plc	€ 68,317,015	214,159,922	-0.01	Negative	€ -	€ 0.007	€ 0.007	2.19%
Medserv plc	€ 67,717,950	53,744,405	0.06	21.36	€ -	€ -	€ -	-
Tigné Mall plc	€ 54,144,000	56,400,000	0.04	26.45	€ 0.013	€ 0.013	€ 0.025	2.64%
Malta Properties Company plc	€ 51,364,417	101,310,488	0.03	16.90	€ -	€ -	€ -	-
Plaza Centres plc	€ 31,320,378	28,242,000	0.04	24.70	€ -	€ 0.045	€ 0.045	4.06%
Malita Investments plc	€ 24,000,000	30,000,000	0.04	18.43	€ 0.013	€ 0.023	€ 0.036	4.45%
Grand Harbour Marina plc	€ 14,520,000	20,000,000	0.02	42.71	€ -	€ -	€ -	-
GlobalCapital plc	€ 10,800,000	30,000,000	0.07	5.07	€ -	€ -	€ -	-
Santumas Shareholdings plc	€ 9,973,773	4,432,788	0.36	6.28	€ -	€ -	€ -	-
Loqus Holdings plc	€ 5,582,325	31,899,000	0.01	21.88	€ -	€ -	€ -	-

Source: Malta Stock Exchange; Curmi and Partners Ltd

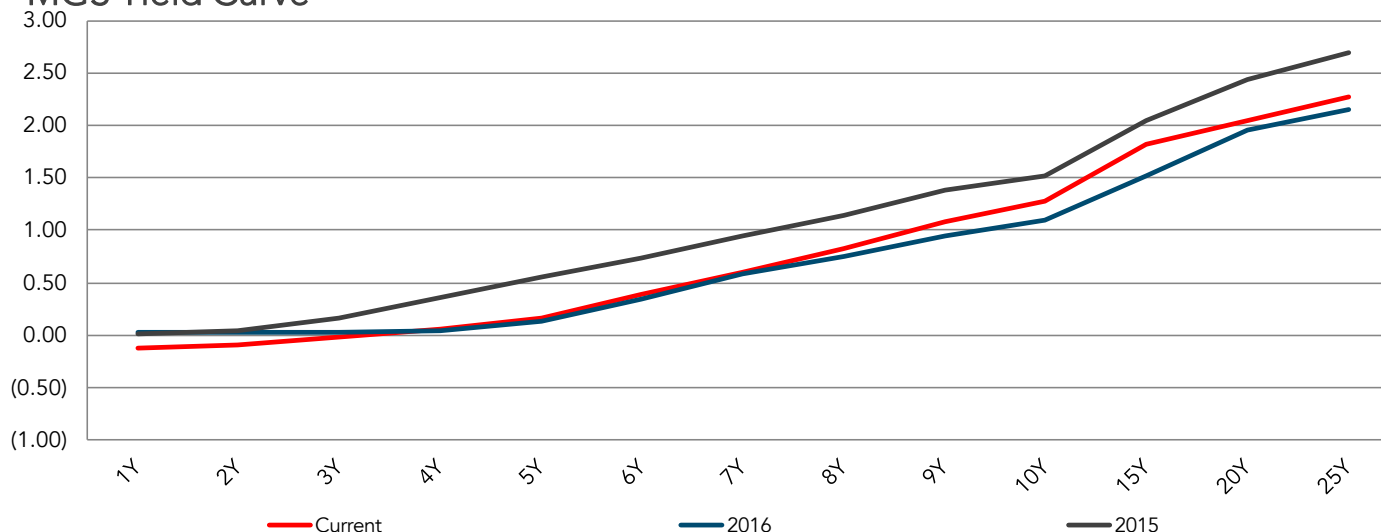
## Malta Government Stocks

### Malta vs. German Sovereign Yields Summary

Years to Maturity	MGS Yield (%)	German Yield (%)	Spread (bps) 31-Dec-16	Spread (bps) 27-Oct-17
2	(0.09)	(0.77)	83	68
5	0.16	(0.35)	67	51
7	0.60	(0.08)	86	68
10	1.27	0.39	90	88
15	1.81	0.63	107	118
20	2.05	0.95	127	110
25	2.27	1.12	128	115

- A total of 23 local sovereign bonds were traded this week. The 7.8% 2018 I was the most actively traded MGS, closing at €105.62 with a YTM of -0.15%
- Both MGS and German Bund yields fell this week following yesterday's ECB meeting during which it extended its bond buying programme until September 2018 and reducing the amount to €30 billion. Bund yields fell at a faster pace than MGS yields.

### MGS Yield Curve



## Local Market Overview – Corporate Bonds

Security	Trade Volume	Trade Value	20.10.2017	27.10.2017	Week % Change
AX24A	2,900	3,219	111.00	111.00	0.00%
BV18A	14,100	14,326	101.60	101.60	0.00%
BV19A	12,400	12,747	102.81	102.80	-0.01%
BV19B	43,300	45,044	103.25	104.25	0.97%
BV20A	3,900	3,998	102.35	102.51	0.16%
BV30A	494,600	494,286	99.99	100.00	0.01%
BV30B	65,000	63,379	95.55	97.99	2.55%
CB27A	800	820	102.59	102.50	-0.09%
CF22A	10,000	10,350	103.50	103.50	0.00%
DF26A	5,000	5,325	106.50	106.50	0.00%
EF27A	165,800	170,808	103.25	102.10	-1.11%
GC21A	15,000	14,701	99.25	98.00	-1.26%
GF21A	393,700	403,083	102.26	102.50	0.23%
GH27A	54,300	56,743	104.48	104.50	0.02%
GP23A	81,600	83,401	103.00	102.00	-0.97%
HB18A	21,600	21,864	100.00	103.50	3.50%
HM24A	174,000	180,975	104.00	104.01	0.01%
HP25A	24,400	25,316	103.00	104.00	0.97%
IB25A	32,100	34,026	106.00	106.00	0.00%
IG24A	259,900	277,259	107.15	106.50	-0.61%
IH21A	94,000	99,640	106.00	106.00	0.00%

Source: Malta Stock Exchange



## Local Market Overview – Corporate Bonds

Security	Trade Volume	Trade Value	20.10.2017	27.10.2017	Week % Change
IH23A	2,700	2,835	104.25	105.00	0.72%
IH26A	29,200	30,053	102.95	102.99	0.04%
IH26B	23,200	23,757	102.50	102.40	-0.10%
MB19A	58,000	62,229	106.02	109.00	2.81%
MB24A	25,000	26,000	103.01	104.00	0.96%
MB27A	50,000	51,248	100.00	102.50	2.50%
MD26A	9,900	10,196	103.01	102.95	-0.06%
MF24A	51,500	54,890	106.65	107.00	0.33%
MI21A	102,900	105,268	102.30	102.30	0.00%
MI22A	15,500	16,056	103.50	103.50	0.00%
MM26A	2,000	2,090	103.01	104.50	1.45%
MS23A	112,500	120,451	106.25	107.20	0.89%
MS26A	267,400	277,154	102.81	103.50	0.67%
PC26A	72,700	74,909	102.95	103.25	0.29%
PG20A	425,500	442,988	104.11	104.11	0.00%
PG22A	50,000	52,960	106.00	105.00	-0.94%
PT24A	4,000	4,140	103.69	103.50	-0.18%
SD27A	15,000	15,450	103.49	103.00	-0.47%
SF27A	2,000	2,090	105.00	104.50	-0.48%
TI24A	181,600	194,312	107.00	107.00	0.00%
TI27A	9,200	9,614	104.50	104.50	0.00%

Source: Malta Stock Exchange

## Local Market Company Announcements

- **Bank of Valletta plc** announced the request of approval of a Prospectus in relation to a rights issue of approximately €150 million worth of new ordinary shares. The rights issue will be offered to existing shareholders appearing on the register of members as at the close of business on the 26<sup>th</sup> October 2017

Rights ratio	1 new ordinary share for every 4 ordinary shares held by existing shareholders
Offer price	€1.43 per new ordinary share
New ordinary shares on offer	105 million ordinary shares of a nominal value of €1.00 per share

- **Loqus Holdings plc** has announced that the Board of Directors will be meeting on the 31<sup>st</sup> October to consider and approve the company's financial statements for the year ended 30<sup>th</sup> June 2017

## Local Financial Events Calendar

Date	Event
27 <sup>th</sup> October	Santumas Shareholding plc Annual General Meeting
31 <sup>st</sup> October	Loqus Holdings plc Board meeting to approve financial statements for the year ended 30th June 2017
14 <sup>th</sup> November	Grand Harbour Marina plc Extraordinary General Meeting
11 <sup>th</sup> December	Malta Post plc Board meeting to approve Financial Statements for the year ended 30 September 2017

*The information presented in this commentary is solely provided for informational purposes and is not to be interpreted as investment advice, or to be used or considered as an offer or a solicitation to sell/buy or subscribe for any financial instruments, nor to constitute any advice or recommendation with respect to such financial instruments. Curmi and Partners Ltd. is a member of the Malta Stock Exchange, and is licensed by the MFSA to conduct investment services business*